

ATLANTIC KOMBU

SINGLE MALT IRISH WHISKEY

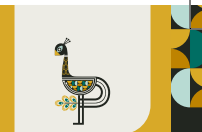
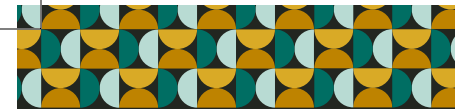
Finished in Atlantic Kombu Seaweed Cask

TASTING NOTES

- ✦ Taste of Arabic roasted coffee fused with salted caramel & dark chocolate notes.
- ✦ Lightly smoked seaside & umami undertones.
- ✦ Notes of toffee & raisins.

Best Served Neat or On the Rocks

FOR MORE INFO REGARDING THIS PRODUCT VISIT
PREISSIMPORTS.COM



ATLANTIC KOMBU

SINGLE MALT IRISH WHISKEY

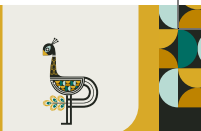
Finished in Atlantic Kombu Seaweed Cask

TASTING NOTES

- ✦ Taste of Arabic roasted coffee fused with salted caramel & dark chocolate notes.
- ✦ Lightly smoked seaside & umami undertones.
- ✦ Notes of toffee & raisins.

Best Served Neat or On the Rocks

FOR MORE INFO REGARDING THIS PRODUCT VISIT
PREISSIMPORTS.COM



ATLANTIC KOMBU

SINGLE MALT IRISH WHISKEY

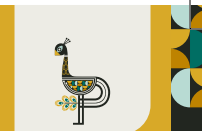
Finished in Atlantic Kombu Seaweed Cask

TASTING NOTES

- ✦ Taste of Arabic roasted coffee fused with salted caramel & dark chocolate notes.
- ✦ Lightly smoked seaside & umami undertones.
- ✦ Notes of toffee & raisins.

Best Served Neat or On the Rocks

FOR MORE INFO REGARDING THIS PRODUCT VISIT
PREISSIMPORTS.COM



ATLANTIC KOMBU

SINGLE MALT IRISH WHISKEY

Finished in Atlantic Kombu Seaweed Cask

TASTING NOTES

- ✦ Taste of Arabic roasted coffee fused with salted caramel & dark chocolate notes.
- ✦ Lightly smoked seaside & umami undertones.
- ✦ Notes of toffee & raisins.

Best Served Neat or On the Rocks

FOR MORE INFO REGARDING THIS PRODUCT VISIT
PREISSIMPORTS.COM



HOW TO

PRINTING INSTRUCTIONS



PREISS
— IMPORTS —

- ✦ After selecting how many copies you would like to print, select a page range of page 1 only, to avoid printing multiple copies of this instruction page.
- ✦ Make sure the page is set to landscape orientation (11" x 8.5") in page setup.
- ✦ Make sure double-sided printing is deselected for products without recipes.